

Quality OptiMISER

Product Information Note

Quality OptiMISER allows paper and continuous web manufacturers to record, retain, analyze and manage all quality data in one location to help ensure a defect-free product.

Honeywell's Quality OptiMISER is an analysis and decision making tool part of the OptiVision® family for pulp and paper and flat sheet industry. Quality OptiMISER allows mills to extract new value from existing investments in quality-related hardware and software. Data from several sources can be combined and viewed simultaneously, giving an unparalleled picture of how product quality compares to a customer's quality standards. Quality OptiMISER is a database and application suite that provides:

- Storage of quality data from multiple sources
- A single window to all available quality data
- Analysis using table, report or graphical display of statistical or raw data
- Improved resolution of customer quality complaints.

Improve Your Business with Quality Management

Quality OptiMISER allows paper and continuous web manufacturers to make maximum use of their available quality data when making critical production and quality decisions.

Quality OptiMISER has been designed to integrate seamlessly with Honeywell's MXProLine® and Experion® MX systems and is also capable of supporting other QCS platforms. It has been engineered for the global market and is deployable in many languages and character sets.



FEATURES & BENEFITS

Benefits

- Provides a single window to all available quality data
- Ensures customers obtain the quality they expect
- Reduces unnecessary quality losses by providing up-to-date information to personnel who need it
- Reduces total costs by standardizing operations and processes on a single quality application
- Easily integrates with Honeywell's MXProLine and Experion MX QCS systems.
- Improves mill performance
- High ROI with low investment
- Ensures higher yields, fewer customer complaints/returns and lower costs for claims or specification management

- Highly configurable
- Generates reports and helps in production analysis
- Facilitates instant quality verification between testing lab and production operations
- Provides immediate feedback on product quality.

Features

- Quality procedure manager
- Contour map trends
- As cut roll/set
- Quality diary
- Lab entry
- Multi variable profile
- Web inspection system fault map overlay
- Centerlining support
- Supports several interfaces

Features include:

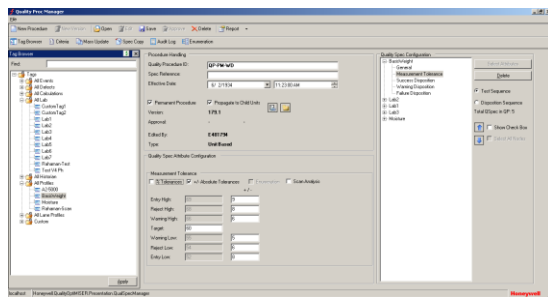
- Ability to analyze quality data in the context of customer quality requirements
- Provision to input quality specifications and product testing data
- Capability to analyze quality of raw materials and recipes
- Tools to track and analyze history and genealogy of products; a quick root cause analysis helps in faster and better customer service
- Enables lab personnel to view QCS data as lab tests are conducted
- Multilingual, imperial/metric support
- Ability to export data into Microsoft Excel/Access

The Quality OptiMISER package provides following features which are used to define quality specifications and view quality data. They are:

- Quality Procedure Manager
- Contour Map
- Trends

Quality Procedure Manager

Allows users to create and configure all aspects of the quality testing procedures which are used by all other Quality OptiMISER applications.

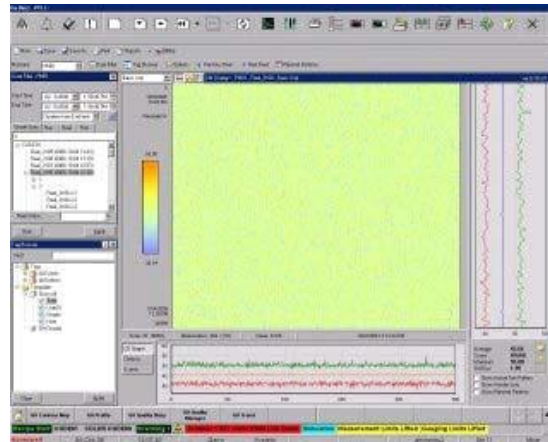


Quality Procedure Manager Display

- Acts as the repository for customer quality criteria
- Specifies sources for quality measurements and actions to take when measurements are out of tolerance limits
- Provides administrative features to facilitate changes in specifications or create new ones based on similar products
- Provides audit trails, version control and approval of quality procedures

Contour Map

Displays all cross direction measurement profiles or machine direction trends for an entire reel of product.

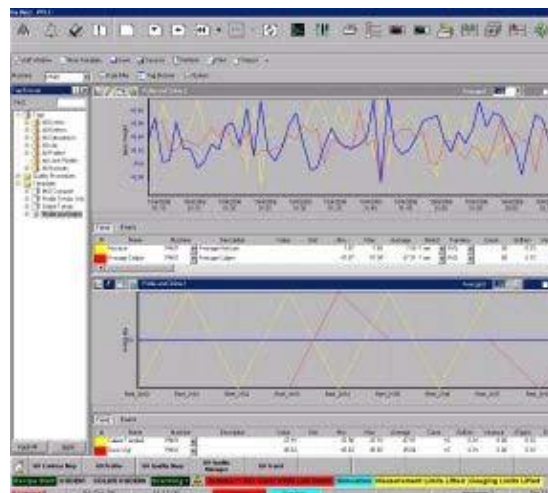


Contour Map Display

- Provides two- and three-dimensional graphical representations of quality data
- Both current and historical data can be viewed
- Current data is updated in real time for fast identification of production problems
- Provides at-a-glance feedback on how product quality compares to customer requirements

Trends

One or more quality parameters to be trended over a specified time period are allowed



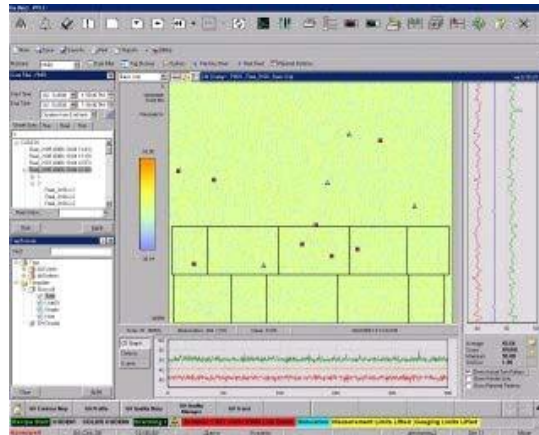
Trend Display

Additional features enhance the functionality of Quality OptiMISER package. They are:

- As Cut/Roll Set
- Quality Diary and Lab Entry
- Multivariable Profile
- Web Inspection System Fault Map Overlay

As Cut Roll/Set

Allows winder trim patterns, slab offs and splices to be assigned to any reel in the Quality OptiMISER database.



As Cut/Roll Set Display

- Overlays as cut or planned trim patterns on the profile contour map
- Identifies potential out-of-tolerance products based on quality procedure criteria
- As cut trim patterns are stored with the quality data for a reel

Quality Diary and Lab Entry

Allows quality lab test results to be manually entered, stored and compared to the QCS quality data.

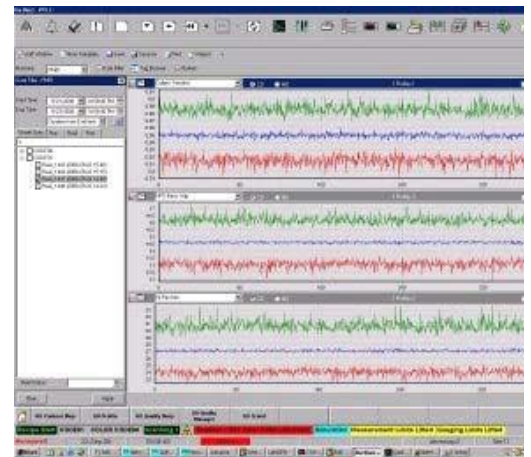
Step	Quality Item	Unit	Value	Tol
1
2
3
4
5
6
7
8
9
10

Quality Diary Display

- Lab data can be compared immediately to online measurements for the reel being tested
- Lab test results can be entered on a raw material, recipe, reel, roll, sample, event or time basis
- Lab and QCS data can be displayed concurrently in both numeric and graphical formats
- Provides test property and inventory unit comments

Multivariable Profile

Displays cross direction measurement profiles from one or more reels.

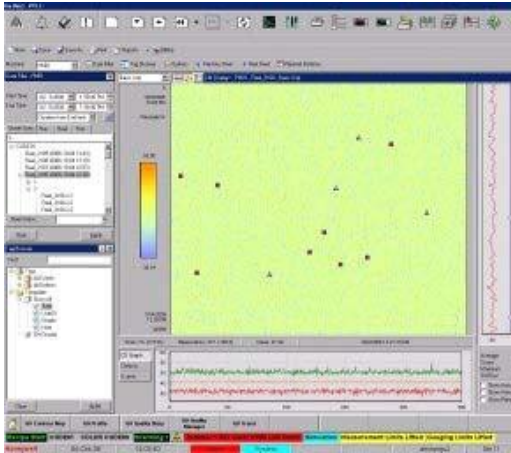


Multivariable Profile Display

- Allows multiple measurement profiles from multiple reels to be viewed on a single operator display
- Upper and lower quality limits can be overlaid on displayed profiles
- Zoom capability and full control over colors, line style, window location and size

Web Inspection System Fault Map Overlay

Overlays sheet defects collected from a web inspection system on a contour map of QCS profile data.



Web Inspection Fault Map Overlay Display

- Overlays the location of sheet defects within a reel onto a contour map of cross directional profiles
- Defects can be easily compared to measured profiles to determine if any relationship exists between profile variations and defect locations
- Sheet defects can be assigned unique icons based on type

Supported Interfaces

- OPC compliant Honeywell QCS with or without an external process historian (PHD or PI)
- Legacy Honeywell QCS (including OPC non-compliant systems)
- Any third-party OPC compliant QCS
- OPC or serial communication based lab devices

OptiVision Suite

Honeywell is an industry leader in integrated Manufacturing Execution Systems that improve plant profitability by enabling plant personnel to work more effectively and make better decisions. Honeywell's OptiVision® Suite provides the data and applications needed to transform business and enable business excellence.

- OptiVision optimizes production and ensures customer orders are completed at the right time, quality and cost. It ensures efficient use of equipment, energy and raw-materials through improved planning, scheduling and tracking. It reduces inventory carrying costs and transportation costs. OptiVision is designed to manage a single site or an entire enterprise.
- Quality OptiMISER collects & analyses quality data and dispositions units to help ensure a defect-free product.
- OptiVision Centerline gives the capability to determine and set Golden Run operating conditions for every grade produced, boosting operating margins.
- OptiVision Production Costing and Intelligence analyses actual consumption costs to identify root cause of variances driving value decisions to improve production performance & profits.
- OptiVision KPI and Dashboard aggregates key process data to serve as executive dashboard and support informed decision making.
- Uniformance® Process Historian Database and Process Studio provides tools to compare and analyze process performance.

OptiVision Support Services

This product comes with worldwide, premium support services through our Benefits Guardianship Program (BGP). BGP is designed to help our customers improve and extend the usage of their software applications and the benefits they deliver, ultimately maintaining and safeguarding their software investment.

Honeywell provides a complete portfolio of service offerings to extend the life of your plant and provide a cost-effective path forward to the latest application technology. Honeywell services include:

- Software installation services
- On-site engineering services
- Migration services
- Scope expansion services
- Assessment services
- Performance baseline and tuning services
- Customized training

For More Information

Learn more about how Honeywell's Quality OptiMISER can manage quality data visit our website www.honeywellprocess.com/software or contact your Honeywell Account Manager, Distributor or System Integrator.

Honeywell Process Solutions

1250 West Sam Houston Parkway South
Houston, TX 77042

Honeywell House, Skimped Hill Lane Bracknell,
Berkshire, England RG12 1EB UK

Building #1, 555 Huanke Road, Zhangjiang Hi-Tech Industrial Park, Pudong New Area,
Shanghai 201203

www.honeywellprocess.com

OptiVision®, MXProLine®, Uniformance® and Experion® are registered trademarks of Honeywell International Inc.

PIN-17-24-ENG
November 2017
© 2017 Honeywell International Inc.

Honeywell